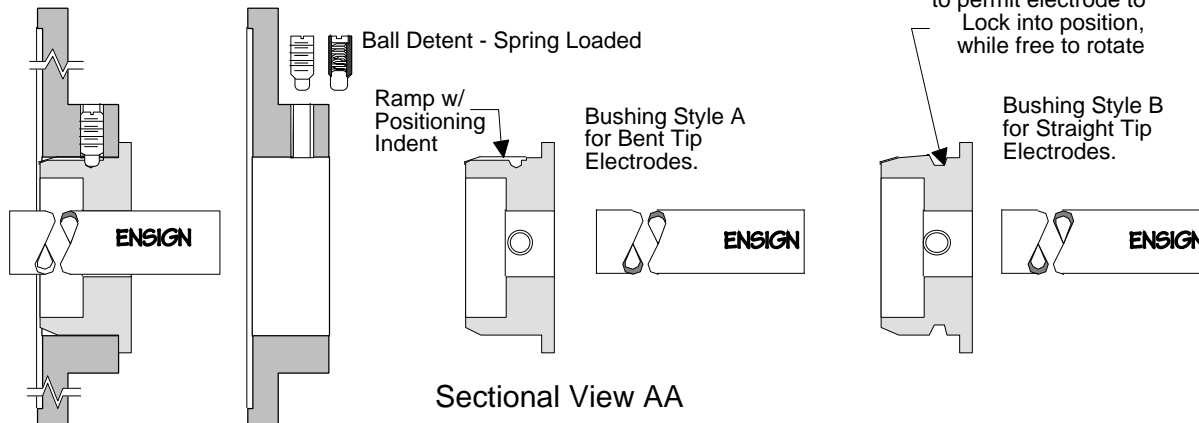
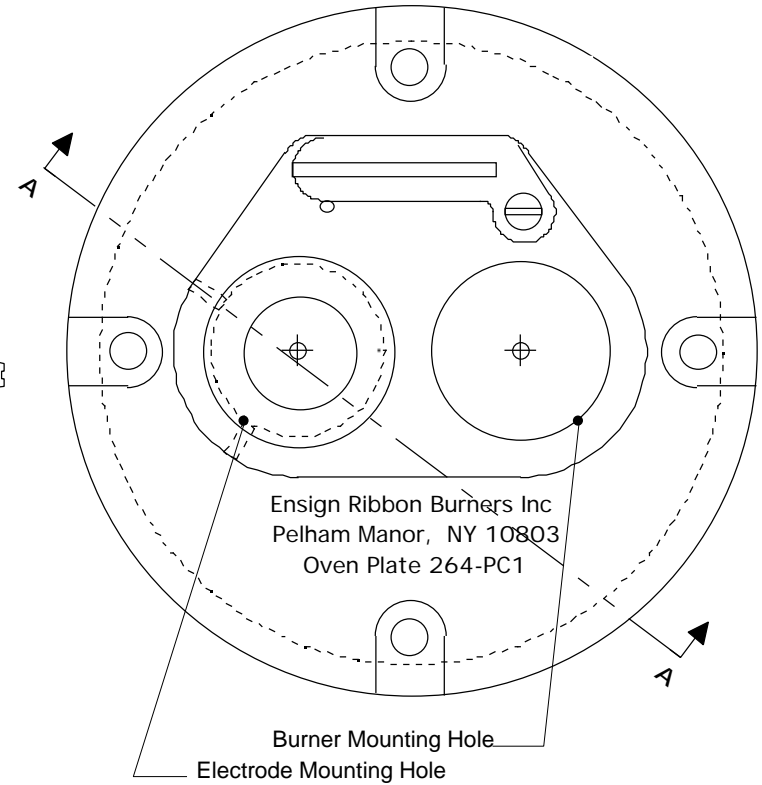


The Pop-Out electrode bushing allows for the easy (No Tools) removal of an electrode (Spark Plug) from the burner plate. Instead of setscrews in the burner plate to lock the electrode bushing into place, the plate is equipped with ball-detents, which slide along ramps in the electrode bushing, thus locking the electrode into the burner at the correct angle and insertion depth. The electrode has to be removed periodically to change tips and adjust positioning. Locking it in place was accomplished using allen keys, wrenches, or a screwdriver, with poor results.



Patent #6,059,479

ENSIGN Ribbon Burners LLC
101 Secor Lane Pelham Manor NY 10803-2791

Pop-Out Electrode Assembly